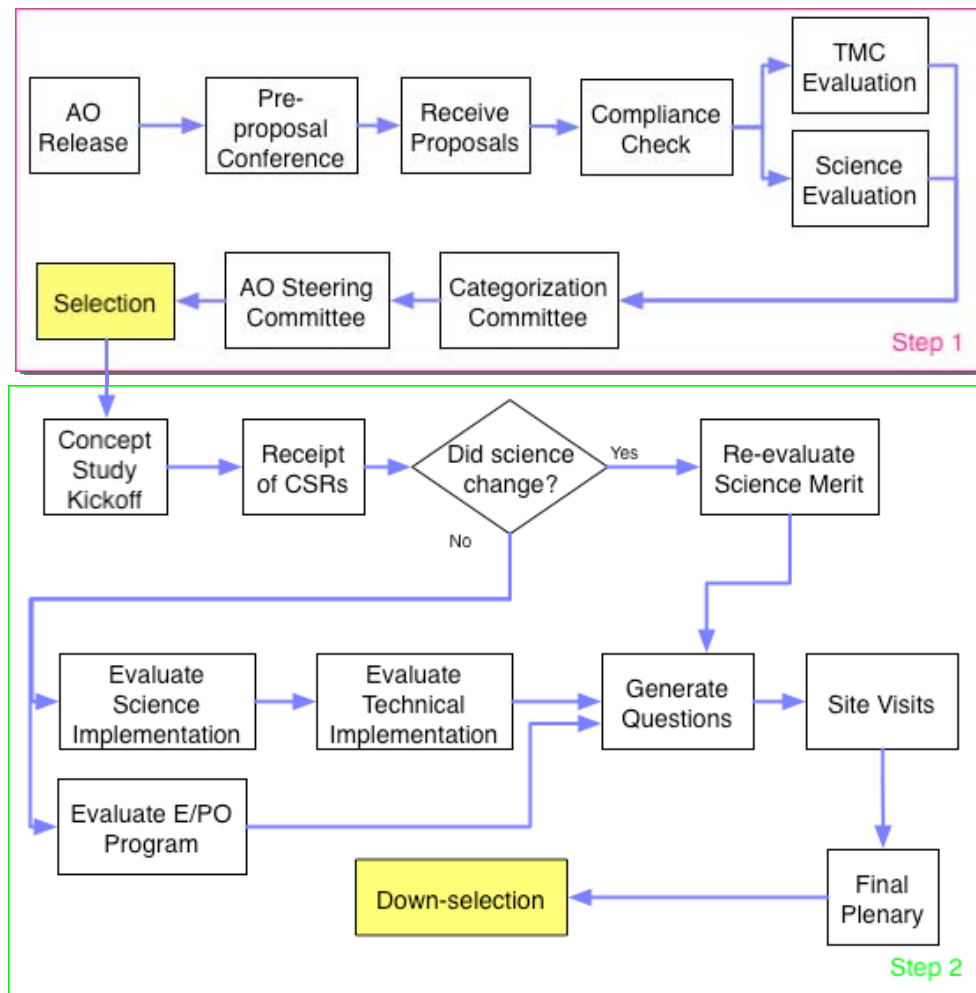

Overview of Discovery, Mars Scout, and Small Explorer (SMEX) Programs

Michael New, PhD
Lead Discovery Program Scientist

Just so everyone's on the same page...

- Discovery, Mars Scout, and SMEX are programs of competitively selected, cost-capped, PI-led missions.
- All use “Two-Step” Acquisition Process
- Discovery and Mars Scout are managed by the Planetary Science Division. SMEX is shared between the Heliophysics and Astrophysics Divisions.

Generalized Review Process



Comparison of Programs

| | Discovery | Mars Scout | SMEX |
|-----------------------|--|--|--|
| Release Date | January 3, 2006 | May 1, 2006 | September 28, 2007 |
| Targets | Any body in Solar System except for Earth, Sun, & Mars | Mars | Heliophysics and Astrophysics goals |
| Cost Cap | \$425M (FY06) | \$475M (FY06) | \$105M (FY08) |
| Launch Vehicle Cost | Frozen at AO release; under cost cap | Frozen after mission confirmation; under cost cap | Outside of cap |
| Required Cost Reserve | 25% development costs at confirmation | None specified in AO; to be evaluated | 30% A/B/C/D/E/F |
| PI Requirements | None (issued before requirements set) | None (issued before requirements set) | Single spaceflight experience with leadership, planning, implementation & approval experience. |
| Letters of Commitment | Required for all contributions & all critical participants | Required for all contributions & all critical participants | Required for all contributions & all critical participants |
| Phase A | \$1.2M (FY06), 7 months | \$2.0M (FY06), 9 months | \$750K (RY), 4 months |